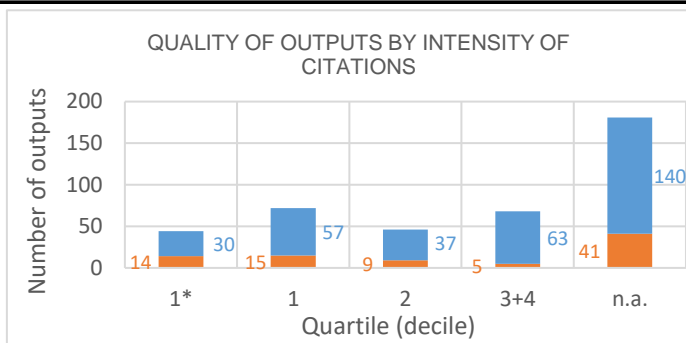
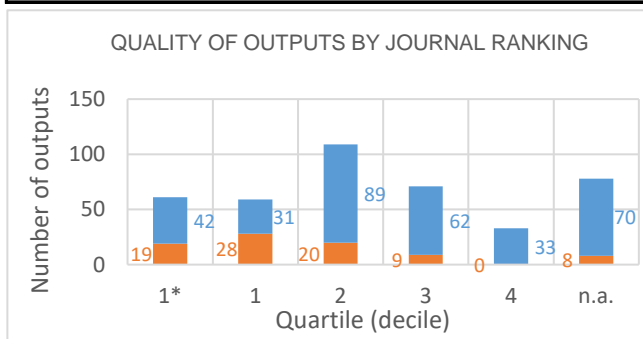


Evaluation of the Research and Professional Activities of the Institutes of the Czech Academy of Sciences for 2015–2019

BIBLIOMETRIC PARAMETERS OF ALL OUTPUTS INCLUDING THOSE EVALUATED IN THE PHASE I.

Institute: Global Change Research Institute of the CAS, v. v. i.
Team: Climate Analysis and Modelling
Head: prof. Mgr. Ing. Miroslav Trnka, Ph.D.
Field: Other natural sciences
Total number of outputs: 411 **Evaluated outputs:** 84



TYPES OF COLLABORATION

Collaboration	Outputs (evaluated)	Outputs (not evaluated)
A1	2	4
B	9	44
B1	11	56
C	12	59
C1	4	24
D	22	113
D1	16	12
E		
n.a.	8	9
Without affiliation		6
A1+B1+C1+D1	33	96
B+C+D+E	43	216

FIELD STRUCTURE OF OUTPUTS

Field structure of outputs	Outputs (evaluated)	Outputs (not evaluated)
Environmental Sciences	19	97
Meteorology Atmospheric Sciences	39	76
Forestry	6	49
Agronomy	10	27
Geosciences Multidisciplinary	10	26
Ecology	5	24
Geography Physical	1	28
Remote Sensing	2	22
n.a.	8	9
Agriculture Multidisciplinary		14
Environmental Studies		14
Multidisciplinary Sciences	7	7
Imaging Science Photographic Techn	1	12
Water Resources	2	8
Biodiversity Conservation	2	7
Mycology		9
Energy Fuels	5	3
Plant Sciences		8
Food Science Technology		7
Green Sustainable Science Technolo		7

Total number of outputs: outputs of the team published during the evaluated period 2015-2019.

Evaluated outputs: selected outputs submitted by the team to the Phase I of evaluation.

Outputs used for bibliometry: subset of all outputs registered in the Web of Science; document type: article, review or proceedings paper.

Quality of outputs by journal ranking: number of outputs in top decile (1*) and quartiles (1-4) by AIS of journals; n. a. - outputs in journals without AIS; orange: outputs from the Phase I, blue: the other outputs of the team.

Quality of outputs by intensity of citations: number of outputs in the top decile (1*) and in quartiles (1, 2, 3+4) determined from the list of outputs ordered by the number of citations (downloaded from the Web of Science at the beginning of evaluation) for each subject category, year, and type of output; n. a. – the data are not robust enough for relevant judgement; orange: outputs from the Phase I, blue: the other outputs of the team.

Types of collaboration: outputs created exclusively in a particular institute are marked by A1, outputs created within national cooperation by max. 5 organizations are marked by B, outputs created within international cooperation by max. 5 organizations are marked C, outputs created within large collaboration exceeding 5 organizations are marked D, outputs created within large international collaboration are marked E. It is distinguished by marking B1/B, C1/C and D1/D whether the output has/does not have a corresponding author from a particular team.

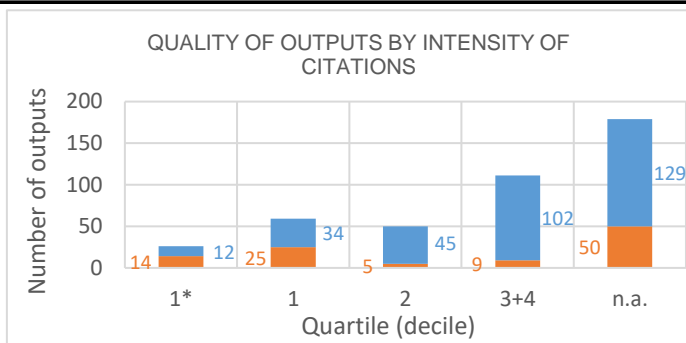
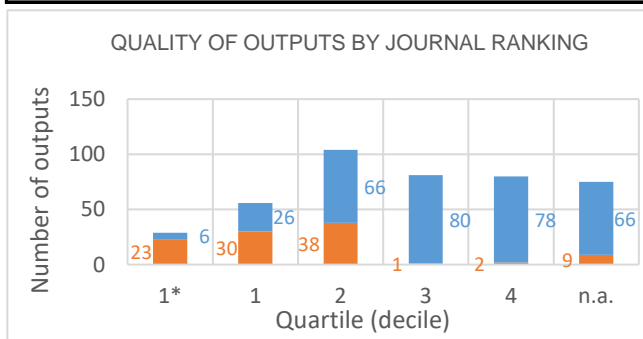
Field structure of outputs: number of outputs of the team in different subject categories (subfields); if the output is assigned to more than one field, the field where the publication performs best (assessed by Quality of outputs by journals ranking) is taken; the table shows up to 20 fields.

Detailed explanation of the indicators is provided in the Methodology of evaluation, Annex 2 – Bibliometrics.

Evaluation of the Research and Professional Activities of the Institutes of the Czech Academy of Sciences for 2015–2019

BIBLIOMETRIC PARAMETERS OF ALL OUTPUTS INCLUDING THOSE EVALUATED IN THE PHASE I.

Institute: Global Change Research Institute of the CAS, v. v. i.
Team: Environmental Effects on Ecosystems
Head: doc. Mgr. Otmar Urban, Ph.D.
Field: Other natural sciences
Total number of outputs: 425 **Evaluated outputs:** 103



TYPES OF COLLABORATION

Collaboration	Outputs (evaluated)	Outputs (not evaluated)
A1	4	13
B	9	54
B1	13	46
C	17	77
C1	19	62
D	26	56
D1	6	3
E		
n.a.	8	6
Without affiliation	1	5
A1+B1+C1+D1	42	124
B+C+D+E	52	187

FIELD STRUCTURE OF OUTPUTS

Field structure of outputs	Outputs (evaluated)	Outputs (not evaluated)
Plant Sciences	22	69
Environmental Sciences	29	57
Forestry	5	39
Ecology	12	29
Multidisciplinary Sciences	10	27
Agronomy	5	29
Biochemistry Molecular Biology	5	20
Chemistry Multidisciplinary	3	18
Biodiversity Conservation	6	13
Food Science Technology	1	16
Meteorology Atmospheric Sciences	9	7
Geosciences Multidisciplinary	5	9
n.a.	8	6
Biotechnology Applied Microbiology	4	7
Water Resources	3	8
Entomology		9
Soil Science	2	4
Agriculture Dairy Animal Science		5
Biochemical Research Methods	2	3
Biology	1	4

Total number of outputs: outputs of the team published during the evaluated period 2015-2019.

Evaluated outputs: selected outputs submitted by the team to the Phase I of evaluation.

Outputs used for bibliometry: subset of all outputs registered in the Web of Science; document type: article, review or proceedings paper.

Quality of outputs by journal ranking: number of outputs in top decile (1*) and quartiles (1-4) by AIS of journals; n. a. - outputs in journals without AIS; orange: outputs from the Phase I, blue: the other outputs of the team.

Quality of outputs by intensity of citations: number of outputs in the top decile (1*) and in quartiles (1, 2, 3+4) determined from the list of outputs ordered by the number of citations (downloaded from the Web of Science at the beginning of evaluation) for each subject category, year, and type of output; n. a. – the data are not robust enough for relevant judgement; orange: outputs from the Phase I, blue: the other outputs of the team.

Types of collaboration: outputs created exclusively in a particular institute are marked by A1, outputs created within national cooperation by max. 5 organizations are marked by B, outputs created within international cooperation by max. 5 organizations are marked C, outputs created within large collaboration exceeding 5 organizations are marked D, outputs created within large international collaboration are marked E. It is distinguished by marking B1/B, C1/C and D1/D whether the output has/does not have a corresponding author from a particular team.

Field structure of outputs: number of outputs of the team in different subject categories (subfields); if the output is assigned to more than one field, the field where the publication performs best (assessed by Quality of outputs by journals ranking) is taken; the table shows up to 20 fields.

Detailed explanation of the indicators is provided in the Methodology of evaluation, Annex 2 – Bibliometrics.

Evaluation of the Research and Professional Activities of the Institutes of the Czech Academy of Sciences for 2015–2019

BIBLIOMETRIC PARAMETERS OF ALL OUTPUTS INCLUDING THOSE EVALUATED IN THE PHASE I.

Institute: Global Change Research Institute of the CAS, v. v. i.

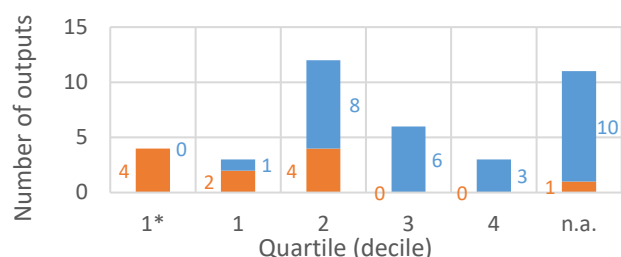
Team: Human Dimensions of Global Change Impacts

Head: Mgr. Dava Vačkářů, Ph.D.

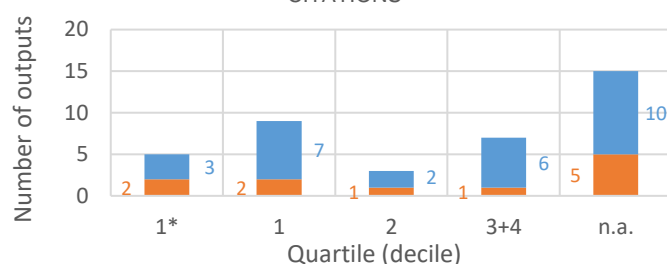
Field: Other social sciences

Total number of outputs: 39 **Evaluated outputs:** 11

QUALITY OF OUTPUTS BY JOURNAL RANKING



QUALITY OF OUTPUTS BY INTENSITY OF CITATIONS



TYPES OF COLLABORATION

Collaboration	Outputs (evaluated)	Outputs (not evaluated)
A1		8
B	2	2
B1	1	5
C	2	9
C1	1	
D	4	3
D1		1
E		
n.a.	1	
Without affiliation		
A1+B1+C1+D1	2	14
B+C+D+E	8	14

FIELD STRUCTURE OF OUTPUTS

Field structure of outputs	Outputs (evaluated)	Outputs (not evaluated)
Environmental Sciences	6	9
Geosciences Multidisciplinary	3	11
Geography Physical	2	4
Ecology	2	3
Engineering Geological	1	4
Environmental Studies	2	3
Green Sustainable Science Technolo	3	2
Meteorology Atmospheric Sciences	1	4
Water Resources		4
Engineering Environmental	2	1
Biodiversity Conservation	1	
Computer Science Interdisciplinary A		1
Development Studies		1
Economics		1
Energy Fuels	1	
Engineering Civil		1
Geology		1
Information Science Library Science		1
n.a.	1	
Regional Urban Planning		1

Total number of outputs: outputs of the team published during the evaluated period 2015-2019.

Evaluated outputs: selected outputs submitted by the team to the Phase I of evaluation.

Outputs used for bibliometry: subset of all outputs registered in the Web of Science; document type: article, review or proceedings paper.

Quality of outputs by journal ranking: number of outputs in top decile (1*) and quartiles (1-4) by AIS of journals; n. a. - outputs in journals without AIS; orange: outputs from the Phase I, blue: the other outputs of the team.

Quality of outputs by intensity of citations: number of outputs in the top decile (1*) and in quartiles (1, 2, 3+4) determined from the list of outputs ordered by the number of citations (downloaded from the Web of Science at the beginning of evaluation) for each subject category, year, and type of output; n. a. – the data are not robust enough for relevant judgement; orange: outputs from the Phase I, blue: the other outputs of the team.

Types of collaboration: outputs created exclusively in a particular institute are marked by A1, outputs created within national cooperation by max. 5 organizations are marked by B, outputs created within international cooperation by max. 5 organizations are marked C, outputs created within large collaboration exceeding 5 organizations are marked D, outputs created within large international collaboration are marked E. It is distinguished by marking B1/B, C1/C and D1/D whether the output has/does not have a corresponding author from a particular team.

Field structure of outputs: number of outputs of the team in different subject categories (subfields); if the output is assigned to more than one field, the field where the publication performs best (assessed by Quality of outputs by journals ranking) is taken; the table shows up to 20 fields.

Detailed explanation of the indicators is provided in the Methodology of evaluation, Annex 2 – Bibliometrics.

NOTE: The significance of bibliometrics in social sciences is very limited.