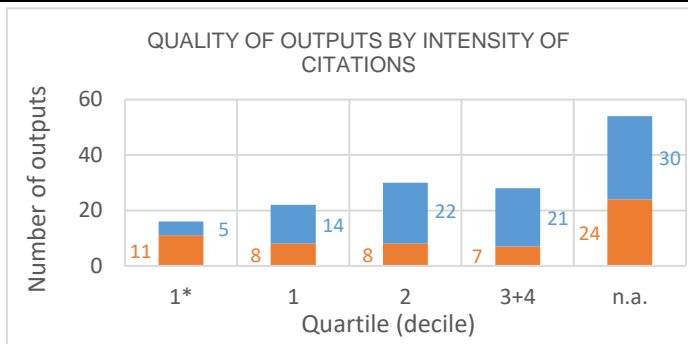
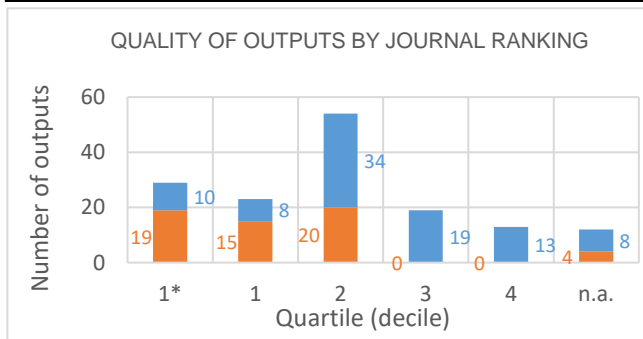


Evaluation of the Research and Professional Activities of the Institutes of the Czech Academy of Sciences for 2015–2019

BIBLIOMETRIC PARAMETERS OF ALL OUTPUTS INCLUDING THOSE EVALUATED IN THE PHASE I.

Institute: Institute of Experimental Botany of the CAS, v. v. i.
Team: Centre of Plant Structural and Functional Genomics
Head: Prof. Ing. Jaroslav Doležel, DrSc.
Field: Biological sciences
Total number of outputs: 150 **Evaluated outputs:** 58



TYPES OF COLLABORATION

Collaboration	Outputs (evaluated)	Outputs (not evaluated)
A1	1	5
B		6
B1	3	5
C	15	39
C1	16	9
D	11	20
D1	9	4
E		
n.a.	3	
Without affiliation		4
A1+B1+C1+D1	29	23
B+C+D+E	26	65

FIELD STRUCTURE OF OUTPUTS

Field structure of outputs	Outputs (evaluated)	Outputs (not evaluated)
Plant Sciences	42	34
Genetics Heredity	14	34
Biotechnology Applied Microbiology	9	17
Multidisciplinary Sciences	2	19
Biochemistry Molecular Biology	7	8
Agronomy	5	6
Biochemical Research Methods	3	6
Cell Biology	1	8
Horticulture	5	3
Chemistry Multidisciplinary	4	1
Evolutionary Biology		4
n.a.	3	
Environmental Sciences	1	1
Biodiversity Conservation	1	
Biology		1
Ecology	1	
Environmental Studies		1
Green Sustainable Science Technolo		1
Chemistry Inorganic Nuclear		1
Marine Freshwater Biology		1

Total number of outputs: outputs of the team published during the evaluated period 2015-2019.

Evaluated outputs: selected outputs submitted by the team to the Phase I of evaluation.

Outputs used for bibliometry: subset of all outputs registered in the Web of Science; document type: article, review or proceedings paper.

Quality of outputs by journal ranking: number of outputs in top decile (1*) and quartiles (1-4) by AIS of journals; n. a. - outputs in journals without AIS; orange: outputs from the Phase I, blue: the other outputs of the team.

Quality of outputs by intensity of citations: number of outputs in the top decile (1*) and in quartiles (1, 2, 3+4) determined from the list of outputs ordered by the number of citations (downloaded from the Web of Science at the beginning of evaluation) for each subject category, year, and type of output; n. a. – the data are not robust enough for relevant judgement; orange: outputs from the Phase I, blue: the other outputs of the team.

Types of collaboration: outputs created exclusively in a particular institute are marked by A1, outputs created within national cooperation by max. 5 organizations are marked by B, outputs created within international cooperation by max. 5 organizations are marked C, outputs created within large collaboration exceeding 5 organizations are marked D, outputs created within large international collaboration are marked E. It is distinguished by marking B1/B, C1/C and D1/D whether the output has/does not have a corresponding author from a particular team.

Field structure of outputs: number of outputs of the team in different subject categories (subfields); if the output is assigned to more than one field, the field where the publication performs best (assessed by Quality of outputs by journals ranking) is taken; the table shows up to 20 fields.

Detailed explanation of the indicators is provided in the Methodology of evaluation, Annex 2 – Bibliometrics.

Evaluation of the Research and Professional Activities of the Institutes of the Czech Academy of Sciences for 2015–2019

BIBLIOMETRIC PARAMETERS OF ALL OUTPUTS INCLUDING THOSE EVALUATED IN THE PHASE I.

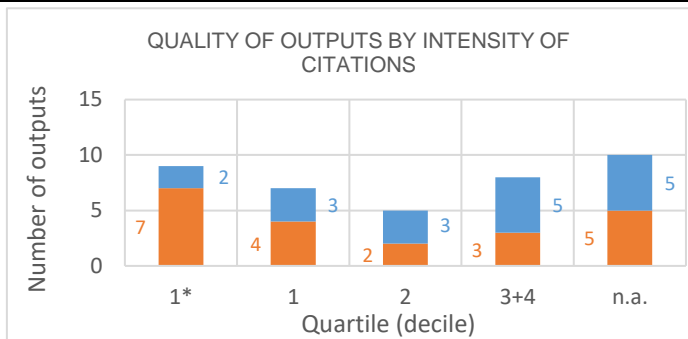
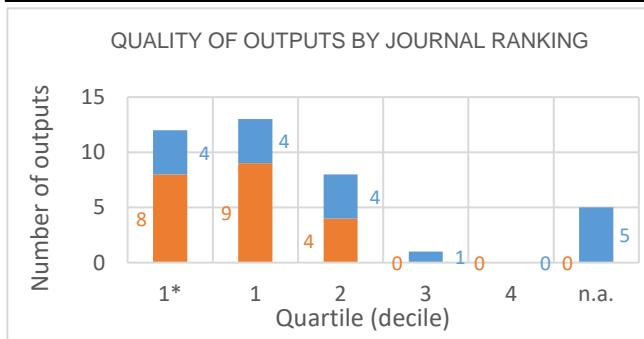
Institute: Institute of Experimental Botany of the CAS, v. v. i.

Team: Laboratory of Cell Biology

Head: Ing. Martin Potocký, Ph.D.

Field: Biological sciences

Total number of outputs: 39 **Evaluated outputs:** 21



TYPES OF COLLABORATION

Collaboration	Outputs (evaluated)	Outputs (not evaluated)
A1		2
B	4	1
B1	7	2
C	3	5
C1	5	2
D	2	3
D1		1
E		
n.a.		1
Without affiliation		1
A1+B1+C1+D1	12	7
B+C+D+E	9	9

FIELD STRUCTURE OF OUTPUTS

Field structure of outputs	Outputs (evaluated)	Outputs (not evaluated)
Plant Sciences	16	10
Biochemistry Molecular Biology	3	4
Cell Biology	3	4
Chemistry Multidisciplinary	2	4
Biophysics	1	1
Biochemical Research Methods	1	
Developmental Biology	1	
Genetics Heredity		1
Multidisciplinary Sciences	1	
n.a.		1
Reproductive Biology		1

Total number of outputs: outputs of the team published during the evaluated period 2015-2019.

Evaluated outputs: selected outputs submitted by the team to the Phase I of evaluation.

Outputs used for bibliometry: subset of all outputs registered in the Web of Science; document type: article, review or proceedings paper.

Quality of outputs by journal ranking: number of outputs in top decile (1*) and quartiles (1-4) by AIS of journals; n. a. - outputs in journals without AIS; orange: outputs from the Phase I, blue: the other outputs of the team.

Quality of outputs by intensity of citations: number of outputs in the top decile (1*) and in quartiles (1, 2, 3+4) determined from the list of outputs ordered by the number of citations (downloaded from the Web of Science at the beginning of evaluation) for each subject category, year, and type of output; n. a. – the data are not robust enough for relevant judgement; orange: outputs from the Phase I, blue: the other outputs of the team.

Types of collaboration: outputs created exclusively in a particular institute are marked by A1, outputs created within national cooperation by max. 5 organizations are marked by B, outputs created within international cooperation by max. 5 organizations are marked C, outputs created within large collaboration exceeding 5 organizations are marked D, outputs created within large international collaboration are marked E. It is distinguished by marking B1/B, C1/C and D1/D whether the output has/does not have a corresponding author from a particular team.

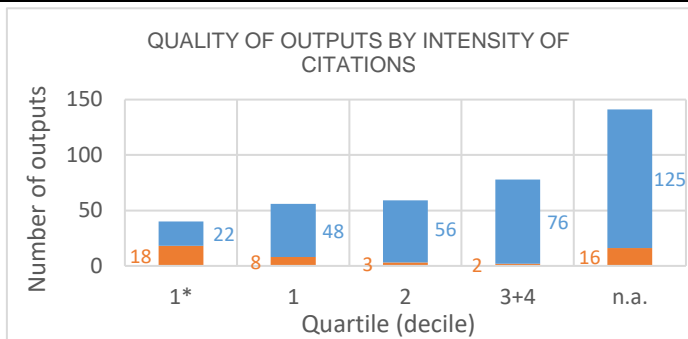
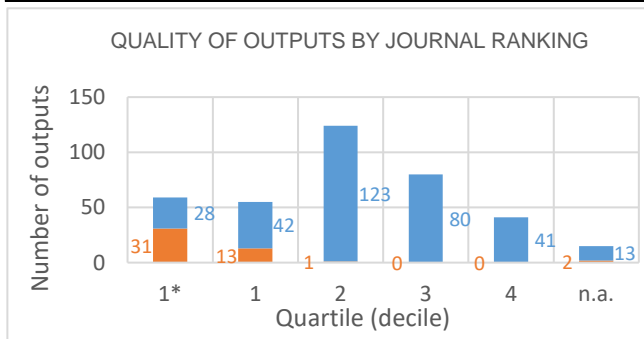
Field structure of outputs: number of outputs of the team in different subject categories (subfields); if the output is assigned to more than one field, the field where the publication performs best (assessed by Quality of outputs by journals ranking) is taken; the table shows up to 20 fields.

Detailed explanation of the indicators is provided in the Methodology of evaluation, Annex 2 – Bibliometrics.

Evaluation of the Research and Professional Activities of the Institutes of the Czech Academy of Sciences for 2015–2019

BIBLIOMETRIC PARAMETERS OF ALL OUTPUTS INCLUDING THOSE EVALUATED IN THE PHASE I.

Institute: Institute of Experimental Botany of the CAS, v. v. i.
Team: Laboratory of Growth Regulators and Isotope Laboratory
Head: Prof. Ing. Miroslav Strnad, DrSc.
Field: Biological sciences
Total number of outputs: 374 **Evaluated outputs:** 47



TYPES OF COLLABORATION

Collaboration	Outputs (evaluated)	Outputs (not evaluated)
A1	1	10
B	3	47
B1	3	35
C	14	108
C1	5	21
D	16	77
D1	3	27
E		
n.a.	2	
Without affiliation		2
A1+B1+C1+D1	12	93
B+C+D+E	33	232

FIELD STRUCTURE OF OUTPUTS

Field structure of outputs	Outputs (evaluated)	Outputs (not evaluated)
Plant Sciences	28	129
Biochemistry Molecular Biology	9	58
Chemistry Medicinal	3	39
Chemistry Organic	2	29
Chemistry Multidisciplinary		26
Biochemical Research Methods		23
Multidisciplinary Sciences	7	16
Biotechnology Applied Microbiology		20
Pharmacology Pharmacy	2	13
Endocrinology Metabolism		14
Chemistry Analytical	1	13
Cell Biology	6	7
Agronomy		11
Environmental Sciences	1	6
Food Science Technology		7
Chemistry Applied		6
Nutrition Dietetics		5
Marine Freshwater Biology		4
Microbiology	1	3
Agricultural Engineering		3

Total number of outputs: outputs of the team published during the evaluated period 2015-2019.

Evaluated outputs: selected outputs submitted by the team to the Phase I of evaluation.

Outputs used for bibliometry: subset of all outputs registered in the Web of Science; document type: article, review or proceedings paper.

Quality of outputs by journal ranking: number of outputs in top decile (1*) and quartiles (1-4) by AIS of journals; n. a. - outputs in journals without AIS; orange: outputs from the Phase I, blue: the other outputs of the team.

Quality of outputs by intensity of citations: number of outputs in the top decile (1*) and in quartiles (1, 2, 3+4) determined from the list of outputs ordered by the number of citations (downloaded from the Web of Science at the beginning of evaluation) for each subject category, year, and type of output; n. a. – the data are not robust enough for relevant judgement; orange: outputs from the Phase I, blue: the other outputs of the team.

Types of collaboration: outputs created exclusively in a particular institute are marked by A1, outputs created within national cooperation by max. 5 organizations are marked by B, outputs created within international cooperation by max. 5 organizations are marked C, outputs created within large collaboration exceeding 5 organizations are marked D, outputs created within large international collaboration are marked E. It is distinguished by marking B1/B, C1/C and D1/D whether the output has/does not have a corresponding author from a particular team.

Field structure of outputs: number of outputs of the team in different subject categories (subfields); if the output is assigned to more than one field, the field where the publication performs best (assessed by Quality of outputs by journals ranking) is taken; the table shows up to 20 fields.

Detailed explanation of the indicators is provided in the Methodology of evaluation, Annex 2 – Bibliometrics.

Evaluation of the Research and Professional Activities of the Institutes of the Czech Academy of Sciences for 2015–2019

BIBLIOMETRIC PARAMETERS OF ALL OUTPUTS INCLUDING THOSE EVALUATED IN THE PHASE I.

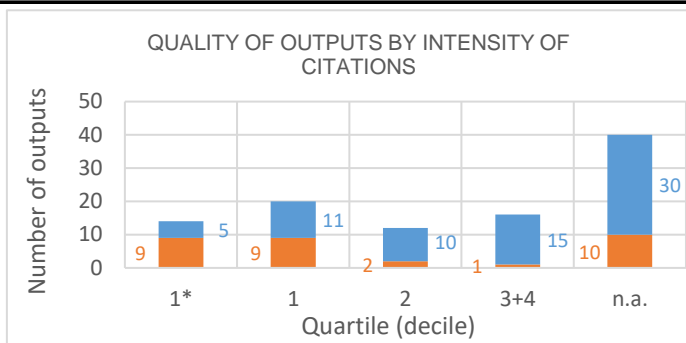
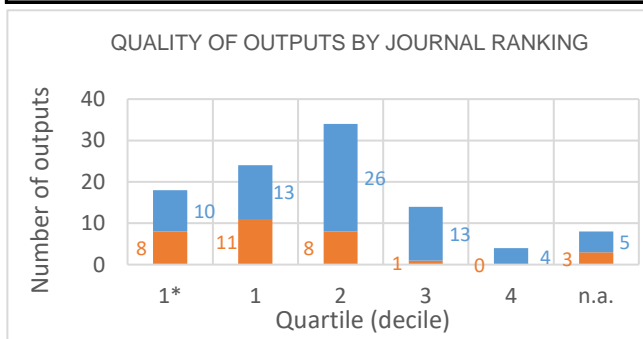
Institute: Institute of Experimental Botany of the CAS, v. v. i.

Team: Laboratory of Hormonal Regulations in Plants

Head: RNDr. Jan Petrášek, Ph.D.

Field: Biological sciences

Total number of outputs: 102 **Evaluated outputs:** 31



TYPES OF COLLABORATION

Collaboration	Outputs (evaluated)	Outputs (not evaluated)
A1		2
B		3
B1	10	17
C	8	35
C1	4	3
D	5	8
D1	2	3
E		
n.a.	2	
Without affiliation		
A1+B1+C1+D1	16	25
B+C+D+E	13	46

FIELD STRUCTURE OF OUTPUTS

Field structure of outputs	Outputs (evaluated)	Outputs (not evaluated)
Plant Sciences	23	48
Biochemistry Molecular Biology	4	12
Environmental Sciences	1	7
Multidisciplinary Sciences	2	6
Cell Biology		6
Chemistry Multidisciplinary	2	3
Biotechnology Applied Microbiology		3
Engineering Environmental		3
Biochemical Research Methods		2
Entomology		2
Horticulture		2
n.a.	2	
Agronomy		1
Endocrinology Metabolism		1
Genetics Heredity		1
Chemistry Medicinal		1
Chemistry Physical		1
Materials Science Multidisciplinary	1	
Microbiology	1	
Microscopy	1	

Total number of outputs: outputs of the team published during the evaluated period 2015-2019.

Evaluated outputs: selected outputs submitted by the team to the Phase I of evaluation.

Outputs used for bibliometry: subset of all outputs registered in the Web of Science; document type: article, review or proceedings paper.

Quality of outputs by journal ranking: number of outputs in top decile (1*) and quartiles (1-4) by AIS of journals; n. a. - outputs in journals without AIS; orange: outputs from the Phase I, blue: the other outputs of the team.

Quality of outputs by intensity of citations: number of outputs in the top decile (1*) and in quartiles (1, 2, 3+4) determined from the list of outputs ordered by the number of citations (downloaded from the Web of Science at the beginning of evaluation) for each subject category, year, and type of output; n. a. – the data are not robust enough for relevant judgement; orange: outputs from the Phase I, blue: the other outputs of the team.

Types of collaboration: outputs created exclusively in a particular institute are marked by A1, outputs created within national cooperation by max. 5 organizations are marked by B, outputs created within international cooperation by max. 5 organizations are marked C, outputs created within large collaboration exceeding 5 organizations are marked D, outputs created within large international collaboration are marked E. It is distinguished by marking B1/B, C1/C and D1/D whether the output has/does not have a corresponding author from a particular team.

Field structure of outputs: number of outputs of the team in different subject categories (subfields); if the output is assigned to more than one field, the field where the publication performs best (assessed by Quality of outputs by journals ranking) is taken; the table shows up to 20 fields.

Detailed explanation of the indicators is provided in the Methodology of evaluation, Annex 2 – Bibliometrics.

Evaluation of the Research and Professional Activities of the Institutes of the Czech Academy of Sciences for 2015–2019

BIBLIOMETRIC PARAMETERS OF ALL OUTPUTS INCLUDING THOSE EVALUATED IN THE PHASE I.

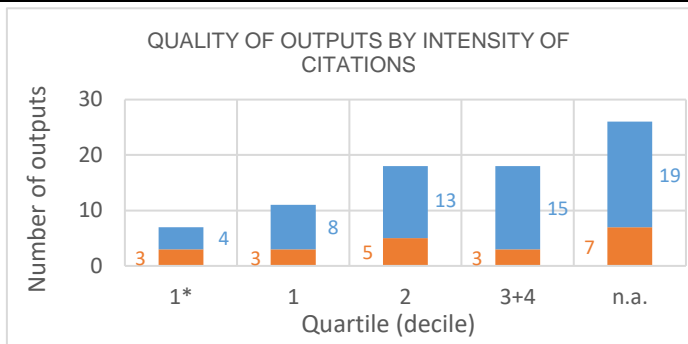
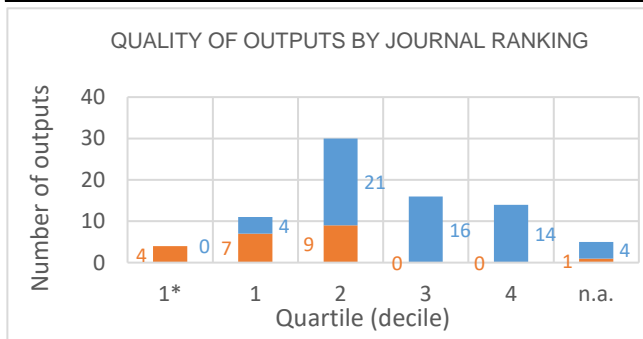
Institute: Institute of Experimental Botany of the CAS, v. v. i.

Team: Laboratory of Plant Biotechnologies

Head: RNDr. Tomáš, Vaněk, CSc.

Field: Biological sciences

Total number of outputs: 80 **Evaluated outputs:** 21



TYPES OF COLLABORATION

Collaboration	Outputs (evaluated)	Outputs (not evaluated)
A1	6	5
B		18
B1	12	15
C	1	7
C1	1	4
D		7
D1		1
E		
n.a.	1	1
Without affiliation		1
A1+B1+C1+D1	19	25
B+C+D+E	1	32

FIELD STRUCTURE OF OUTPUTS

Field structure of outputs	Outputs (evaluated)	Outputs (not evaluated)
Environmental Sciences	12	18
Plant Sciences	3	15
Food Science Technology	2	6
Pharmacology Pharmacy	5	3
Toxicology	1	7
Chemistry Medicinal	2	5
Chemistry Multidisciplinary		6
Biochemistry Molecular Biology		5
Chemistry Applied	2	3
Engineering Environmental	4	
Immunology		3
Nutrition Dietetics	1	2
Water Resources		3
Agricultural Engineering		2
Agronomy	1	1
Ecology		2
Meteorology Atmospheric Sciences		2
Multidisciplinary Sciences		2
n.a.	1	1
Biochemical Research Methods		1

Total number of outputs: outputs of the team published during the evaluated period 2015-2019.

Evaluated outputs: selected outputs submitted by the team to the Phase I of evaluation.

Outputs used for bibliometry: subset of all outputs registered in the Web of Science; document type: article, review or proceedings paper.

Quality of outputs by journal ranking: number of outputs in top decile (1*) and quartiles (1-4) by AIS of journals; n. a. - outputs in journals without AIS; orange: outputs from the Phase I, blue: the other outputs of the team.

Quality of outputs by intensity of citations: number of outputs in the top decile (1*) and in quartiles (1, 2, 3+4) determined from the list of outputs ordered by the number of citations (downloaded from the Web of Science at the beginning of evaluation) for each subject category, year, and type of output; n. a. – the data are not robust enough for relevant judgement; orange: outputs from the Phase I, blue: the other outputs of the team.

Types of collaboration: outputs created exclusively in a particular institute are marked by A1, outputs created within national cooperation by max. 5 organizations are marked by B, outputs created within international cooperation by max. 5 organizations are marked C, outputs created within large collaboration exceeding 5 organizations are marked D, outputs created within large international collaboration are marked E. It is distinguished by marking B1/B, C1/C and D1/D whether the output has/does not have a corresponding author from a particular team.

Field structure of outputs: number of outputs of the team in different subject categories (subfields); if the output is assigned to more than one field, the field where the publication performs best (assessed by Quality of outputs by journals ranking) is taken; the table shows up to 20 fields.

Detailed explanation of the indicators is provided in the Methodology of evaluation, Annex 2 – Bibliometrics.

Evaluation of the Research and Professional Activities of the Institutes of the Czech Academy of Sciences for 2015–2019

BIBLIOMETRIC PARAMETERS OF ALL OUTPUTS INCLUDING THOSE EVALUATED IN THE PHASE I.

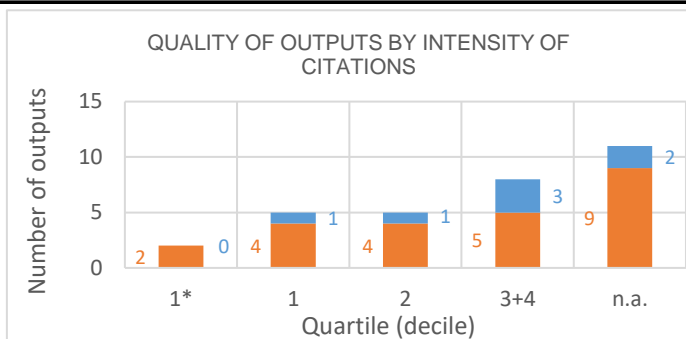
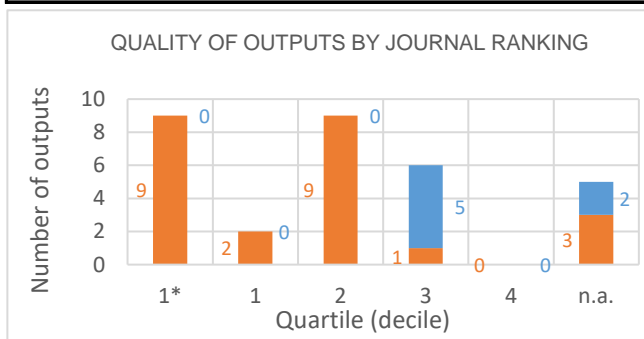
Institute: Institute of Experimental Botany of the CAS, v. v. i.

Team: Laboratory of Pollen Biology

Head: doc. RNDr. David Honys, Ph.D.

Field: Biological sciences

Total number of outputs: 31 **Evaluated outputs:** 24



TYPES OF COLLABORATION

Collaboration	Outputs (evaluated)	Outputs (not evaluated)
A1	4	1
B	3	1
B1	4	1
C	4	
C1	1	
D	4	3
D1	2	1
E		
n.a.	2	
Without affiliation		
A1+B1+C1+D1	11	3
B+C+D+E	11	4

FIELD STRUCTURE OF OUTPUTS

Field structure of outputs	Outputs (evaluated)	Outputs (not evaluated)
Plant Sciences	14	3
Genetics Heredity	3	1
Biochemical Research Methods	2	1
Biochemistry Molecular Biology	2	1
Reproductive Biology	2	1
Biotechnology Applied Microbiology	2	
n.a.	2	
Oncology		2
Cell Biology		1
Evolutionary Biology		1
Forestry	1	
Chemistry Medicinal	1	
Multidisciplinary Sciences	1	
Obstetrics Gynecology		1
Toxicology	1	

Total number of outputs: outputs of the team published during the evaluated period 2015-2019.

Evaluated outputs: selected outputs submitted by the team to the Phase I of evaluation.

Outputs used for bibliometry: subset of all outputs registered in the Web of Science; document type: article, review or proceedings paper.

Quality of outputs by journal ranking: number of outputs in top decile (1*) and quartiles (1-4) by AIS of journals; n. a. - outputs in journals without AIS; orange: outputs from the Phase I, blue: the other outputs of the team.

Quality of outputs by intensity of citations: number of outputs in the top decile (1*) and in quartiles (1, 2, 3+4) determined from the list of outputs ordered by the number of citations (downloaded from the Web of Science at the beginning of evaluation) for each subject category, year, and type of output; n. a. – the data are not robust enough for relevant judgement; orange: outputs from the Phase I, blue: the other outputs of the team.

Types of collaboration: outputs created exclusively in a particular institute are marked by A1, outputs created within national cooperation by max. 5 organizations are marked by B, outputs created within international cooperation by max. 5 organizations are marked C, outputs created within large collaboration exceeding 5 organizations are marked D, outputs created within large international collaboration are marked E. It is distinguished by marking B1/B, C1/C and D1/D whether the output has/does not have a corresponding author from a particular team.

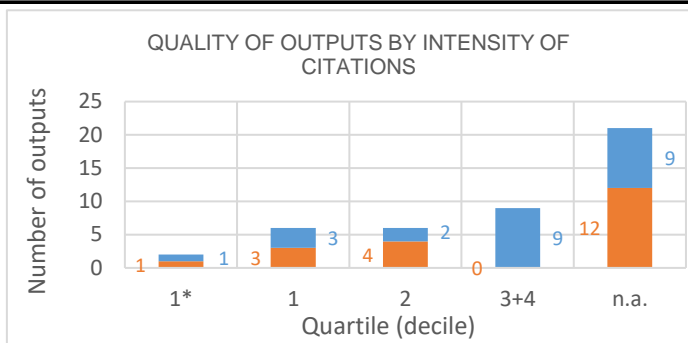
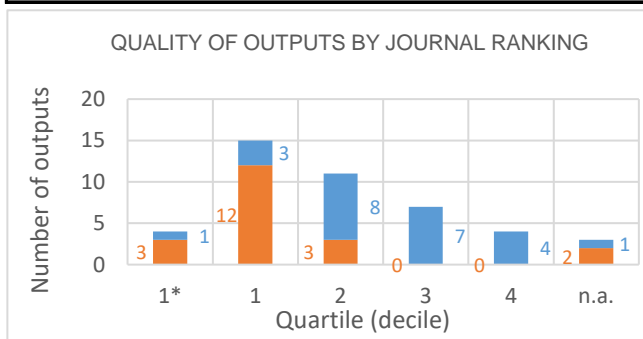
Field structure of outputs: number of outputs of the team in different subject categories (subfields); if the output is assigned to more than one field, the field where the publication performs best (assessed by Quality of outputs by journals ranking) is taken; the table shows up to 20 fields.

Detailed explanation of the indicators is provided in the Methodology of evaluation, Annex 2 – Bibliometrics.

Evaluation of the Research and Professional Activities of the Institutes of the Czech Academy of Sciences for 2015–2019

BIBLIOMETRIC PARAMETERS OF ALL OUTPUTS INCLUDING THOSE EVALUATED IN THE PHASE I.

Institute:	Institute of Experimental Botany of the CAS, v. v. i.		
Team:	Laboratory of Signal Transduction, Laboratory of Pathological Plant Physiology, and Laboratory of Biologi		
Head:	RNDr. Jan Martinec, CSc.		
Field:	Biological sciences		
Total number of outputs:	44	Evaluated outputs:	20



TYPES OF COLLABORATION

Collaboration	Outputs (evaluated)	Outputs (not evaluated)
A1	1	5
B	3	3
B1	4	6
C	2	5
C1	5	2
D	1	3
D1	2	
E		
n.a.	2	
Without affiliation		
A1+B1+C1+D1	12	13
B+C+D+E	6	11

FIELD STRUCTURE OF OUTPUTS

Field structure of outputs	Outputs (evaluated)	Outputs (not evaluated)
Plant Sciences	14	16
Biochemistry Molecular Biology	1	3
Biotechnology Applied Microbiology	1	2
Environmental Sciences	1	2
Forestry		3
Food Science Technology		2
n.a.	2	
Agriculture Multidisciplinary		1
Agronomy		1
Biochemical Research Methods		1
Endocrinology Metabolism		1
Engineering Environmental		1
Green Sustainable Science Technolo		1
Materials Science Multidisciplinary		1
Microbiology	1	
Multidisciplinary Sciences	1	
Nanoscience Nanotechnology		1
Nutrition Dietetics	1	
Physics Applied		1

Total number of outputs: outputs of the team published during the evaluated period 2015-2019.

Evaluated outputs: selected outputs submitted by the team to the Phase I of evaluation.

Outputs used for bibliometry: subset of all outputs registered in the Web of Science; document type: article, review or proceedings paper.

Quality of outputs by journal ranking: number of outputs in top decile (1*) and quartiles (1-4) by AIS of journals; n. a. - outputs in journals without AIS; orange: outputs from the Phase I, blue: the other outputs of the team.

Quality of outputs by intensity of citations: number of outputs in the top decile (1*) and in quartiles (1, 2, 3+4) determined from the list of outputs ordered by the number of citations (downloaded from the Web of Science at the beginning of evaluation) for each subject category, year, and type of output; n. a. – the data are not robust enough for relevant judgement; orange: outputs from the Phase I, blue: the other outputs of the team.

Types of collaboration: outputs created exclusively in a particular institute are marked by A1, outputs created within national cooperation by max. 5 organizations are marked by B, outputs created within international cooperation by max. 5 organizations are marked C, outputs created within large collaboration exceeding 5 organizations are marked D, outputs created within large international collaboration are marked E. It is distinguished by marking B1/B, C1/C and D1/D whether the output has/does not have a corresponding author from a particular team.

Field structure of outputs: number of outputs of the team in different subject categories (subfields); if the output is assigned to more than one field, the field where the publication performs best (assessed by Quality of outputs by journals ranking) is taken; the table shows up to 20 fields.

Detailed explanation of the indicators is provided in the Methodology of evaluation, Annex 2 – Bibliometrics.

Evaluation of the Research and Professional Activities of the Institutes of the Czech Academy of Sciences for 2015–2019

BIBLIOMETRIC PARAMETERS OF ALL OUTPUTS INCLUDING THOSE EVALUATED IN THE PHASE I.

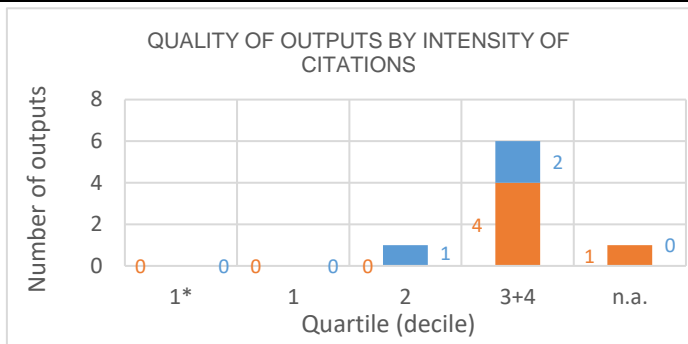
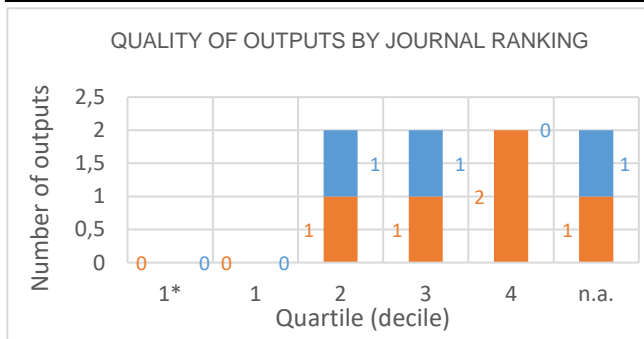
Institute: Institute of Experimental Botany of the CAS, v. v. i.

Team: Laboratory of Virology

Head: RNDr. Tomáš Moravec, Ph.D.

Field: Biological sciences

Total number of outputs: 8 **Evaluated outputs:** 5



TYPES OF COLLABORATION

Collaboration	Outputs (evaluated)	Outputs (not evaluated)
A1	1	1
B		1
B1	3	1
C		
C1		
D		
D1		
E		
n.a.	1	
Without affiliation		
A1+B1+C1+D1	4	2
B+C+D+E		1

FIELD STRUCTURE OF OUTPUTS

Field structure of outputs	Outputs (evaluated)	Outputs (not evaluated)
Plant Sciences	4	1
Biochemical Research Methods	1	
Biochemistry Molecular Biology		1
Biology		1
Biotechnology Applied Microbiology	1	
Multidisciplinary Sciences		1
n.a.	1	

Total number of outputs: outputs of the team published during the evaluated period 2015-2019.

Evaluated outputs: selected outputs submitted by the team to the Phase I of evaluation.

Outputs used for bibliometry: subset of all outputs registered in the Web of Science; document type: article, review or proceedings paper.

Quality of outputs by journal ranking: number of outputs in top decile (1*) and quartiles (1-4) by AIS of journals; n. a. - outputs in journals without AIS; orange: outputs from the Phase I, blue: the other outputs of the team.

Quality of outputs by intensity of citations: number of outputs in the top decile (1*) and in quartiles (1, 2, 3+4) determined from the list of outputs ordered by the number of citations (downloaded from the Web of Science at the beginning of evaluation) for each subject category, year, and type of output; n. a. – the data are not robust enough for relevant judgement; orange: outputs from the Phase I, blue: the other outputs of the team.

Types of collaboration: outputs created exclusively in a particular institute are marked by A1, outputs created within national cooperation by max. 5 organizations are marked by B, outputs created within international cooperation by max. 5 organizations are marked C, outputs created within large collaboration exceeding 5 organizations are marked D, outputs created within large international collaboration are marked E. It is distinguished by marking B1/B, C1/C and D1/D whether the output has/does not have a corresponding author from a particular team.

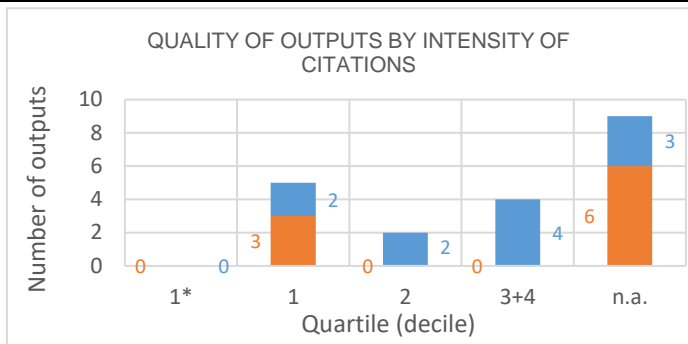
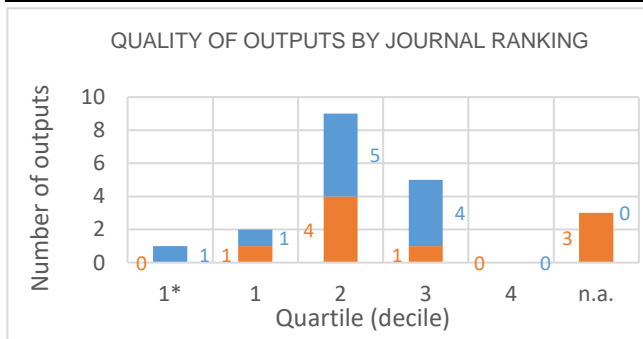
Field structure of outputs: number of outputs of the team in different subject categories (subfields); if the output is assigned to more than one field, the field where the publication performs best (assessed by Quality of outputs by journals ranking) is taken; the table shows up to 20 fields.

Detailed explanation of the indicators is provided in the Methodology of evaluation, Annex 2 – Bibliometrics.

Evaluation of the Research and Professional Activities of the Institutes of the Czech Academy of Sciences for 2015–2019

BIBLIOMETRIC PARAMETERS OF ALL OUTPUTS INCLUDING THOSE EVALUATED IN THE PHASE I.

Institute: Institute of Experimental Botany of the CAS, v. v. i.
Team: Plant Reproduction Laboratory and Station of Apple Breeding for Disease Resistance
Head: RNDr. Helena Štorchová, CSc.
Field: Biological sciences
Total number of outputs: 20 **Evaluated outputs:** 9



TYPES OF COLLABORATION

Collaboration	Outputs (evaluated)	Outputs (not evaluated)
A1	1	2
B		2
B1	1	3
C	1	1
C1	3	1
D		2
D1		
E		
n.a.	3	
Without affiliation		
A1+B1+C1+D1	5	6
B+C+D+E	1	5

FIELD STRUCTURE OF OUTPUTS

Field structure of outputs	Outputs (evaluated)	Outputs (not evaluated)
Plant Sciences	4	3
Genetics Heredity	2	3
Biochemistry Molecular Biology		4
n.a.	3	
Biotechnology Applied Microbiology	2	
Multidisciplinary Sciences		2
Agronomy	1	
Evolutionary Biology		1
Chemistry Multidisciplinary		1
Microbiology		1
Mycology		1

Total number of outputs: outputs of the team published during the evaluated period 2015-2019.

Evaluated outputs: selected outputs submitted by the team to the Phase I of evaluation.

Outputs used for bibliometry: subset of all outputs registered in the Web of Science; document type: article, review or proceedings paper.

Quality of outputs by journal ranking: number of outputs in top decile (1*) and quartiles (1-4) by AIS of journals; n. a. - outputs in journals without AIS; orange: outputs from the Phase I, blue: the other outputs of the team.

Quality of outputs by intensity of citations: number of outputs in the top decile (1*) and in quartiles (1, 2, 3+4) determined from the list of outputs ordered by the number of citations (downloaded from the Web of Science at the beginning of evaluation) for each subject category, year, and type of output; n. a. – the data are not robust enough for relevant judgement; orange: outputs from the Phase I, blue: the other outputs of the team.

Types of collaboration: outputs created exclusively in a particular institute are marked by A1, outputs created within national cooperation by max. 5 organizations are marked by B, outputs created within international cooperation by max. 5 organizations are marked C, outputs created within large collaboration exceeding 5 organizations are marked D, outputs created within large international collaboration are marked E. It is distinguished by marking B1/B, C1/C and D1/D whether the output has/does not have a corresponding author from a particular team.

Field structure of outputs: number of outputs of the team in different subject categories (subfields); if the output is assigned to more than one field, the field where the publication performs best (assessed by Quality of outputs by journals ranking) is taken; the table shows up to 20 fields.

Detailed explanation of the indicators is provided in the Methodology of evaluation, Annex 2 – Bibliometrics.