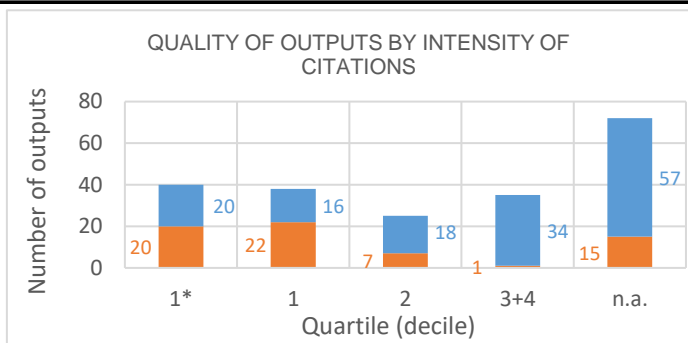
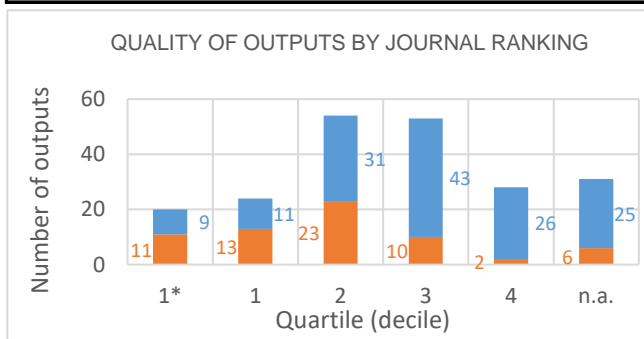


Evaluation of the Research and Professional Activities of the Institutes of the Czech Academy of Sciences for 2015–2019

BIBLIOMETRIC PARAMETERS OF ALL OUTPUTS INCLUDING THOSE EVALUATED IN THE PHASE I.

Institute: Institute of Plasma Physics of the CAS, v. v. i.
Team: Tokamak
Head: Ing. Martin Hron, Ph.D.
Field: Physical sciences
Total number of outputs: 210 **Evaluated outputs:** 65



TYPES OF COLLABORATION

Collaboration	Outputs (evaluated)	Outputs (not evaluated)
A1		3
B	1	9
B1	2	5
C	12	40
C1	16	34
D	19	41
D1	10	9
E		
n.a.	2	
Without affiliation	3	4
A1+B1+C1+D1	28	51
B+C+D+E	32	90

FIELD STRUCTURE OF OUTPUTS

Field structure of outputs	Outputs (evaluated)	Outputs (not evaluated)
Physics Fluids Plasmas	39	59
Nuclear Science Technology	15	47
Physics Applied	5	20
Instruments Instrumentation	5	18
Materials Science Multidisciplinary	7	7
Physics Multidisciplinary	4	10
Chemistry Inorganic Nuclear		4
Physics Nuclear		4
Energy Fuels		2
Engineering Electrical Electronic		2
Engineering Multidisciplinary		2
n.a.	2	
Automation Control Systems		1
Physics Atomic Molecular Chemical		1
Physics Condensed Matter		1
Thermodynamics		1

Total number of outputs: outputs of the team published during the evaluated period 2015-2019.

Evaluated outputs: selected outputs submitted by the team to the Phase I of evaluation.

Outputs used for bibliometry: subset of all outputs registered in the Web of Science; document type: article, review or proceedings paper.

Quality of outputs by journal ranking: number of outputs in top decile (1*) and quartiles (1-4) by AIS of journals; n. a. - outputs in journals without AIS; orange: outputs from the Phase I, blue: the other outputs of the team.

Quality of outputs by intensity of citations: number of outputs in the top decile (1*) and in quartiles (1, 2, 3+4) determined from the list of outputs ordered by the number of citations (downloaded from the Web of Science at the beginning of evaluation) for each subject category, year, and type of output; n. a. – the data are not robust enough for relevant judgement; orange: outputs from the Phase I, blue: the other outputs of the team.

Types of collaboration: outputs created exclusively in a particular institute are marked by A1, outputs created within national cooperation by max. 5 organizations are marked by B, outputs created within international cooperation by max. 5 organizations are marked C, outputs created within large collaboration exceeding 5 organizations are marked D, outputs created within large international collaboration are marked E. It is distinguished by marking B1/B, C1/C and D1/D whether the output has/does not have a corresponding author from a particular team.

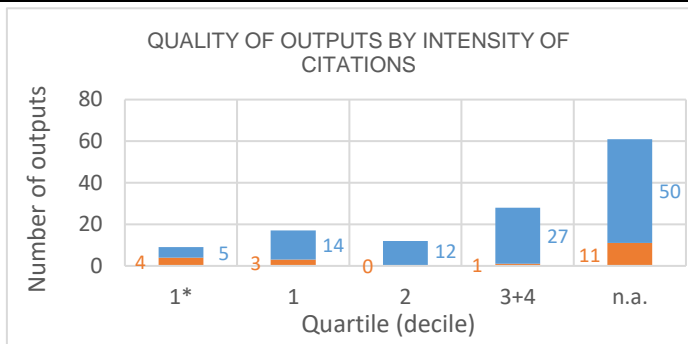
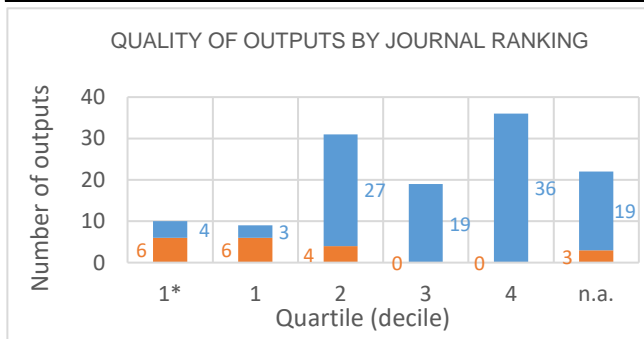
Field structure of outputs: number of outputs of the team in different subject categories (subfields); if the output is assigned to more than one field, the field where the publication performs best (assessed by Quality of outputs by journals ranking) is taken; the table shows up to 20 fields.

Detailed explanation of the indicators is provided in the Methodology of evaluation, Annex 2 – Bibliometrics.

Evaluation of the Research and Professional Activities of the Institutes of the Czech Academy of Sciences for 2015–2019

BIBLIOMETRIC PARAMETERS OF ALL OUTPUTS INCLUDING THOSE EVALUATED IN THE PHASE I.

Institute: Institute of Plasma Physics of the CAS, v. v. i.
Team: Laser Plasma
Head: Ing. Miroslav Krůs, Ph.D.
Field: Physical sciences
Total number of outputs: 127 **Evaluated outputs:** 19



TYPES OF COLLABORATION

Collaboration	Outputs (evaluated)	Outputs (not evaluated)
A1		1
B	1	8
B1	2	11
C	2	31
C1	2	7
D	9	44
D1		2
E		
n.a.	3	
Without affiliation		4
A1+B1+C1+D1	4	21
B+C+D+E	12	83

FIELD STRUCTURE OF OUTPUTS

Field structure of outputs	Outputs (evaluated)	Outputs (not evaluated)
Physics Fluids Plasmas	6	28
Physics Applied		30
Optics	2	22
Instruments Instrumentation		20
Physics Atomic Molecular Chemical	1	12
Physics Nuclear		12
Nuclear Science Technology		10
Physics Multidisciplinary	4	6
Materials Science Multidisciplinary		7
Astronomy Astrophysics	3	3
Engineering Electrical Electronic		5
Multidisciplinary Sciences	1	4
Physics Condensed Matter		4
Chemistry Inorganic Nuclear		3
Chemistry Physical		3
n.a.	3	
Biology		2
Biophysics		2
Physics Particles Fields		2
Radiology Nuclear Medicine Medical		2

Total number of outputs: outputs of the team published during the evaluated period 2015-2019.

Evaluated outputs: selected outputs submitted by the team to the Phase I of evaluation.

Outputs used for bibliometry: subset of all outputs registered in the Web of Science; document type: article, review or proceedings paper.

Quality of outputs by journal ranking: number of outputs in top decile (1*) and quartiles (1-4) by AIS of journals; n. a. - outputs in journals without AIS; orange: outputs from the Phase I, blue: the other outputs of the team.

Quality of outputs by intensity of citations: number of outputs in the top decile (1*) and in quartiles (1, 2, 3+4) determined from the list of outputs ordered by the number of citations (downloaded from the Web of Science at the beginning of evaluation) for each subject category, year, and type of output; n. a. – the data are not robust enough for relevant judgement; orange: outputs from the Phase I, blue: the other outputs of the team.

Types of collaboration: outputs created exclusively in a particular institute are marked by A1, outputs created within national cooperation by max. 5 organizations are marked by B, outputs created within international cooperation by max. 5 organizations are marked C, outputs created within large collaboration exceeding 5 organizations are marked D, outputs created within large international collaboration are marked E. It is distinguished by marking B1/B, C1/C and D1/D whether the output has/does not have a corresponding author from a particular team.

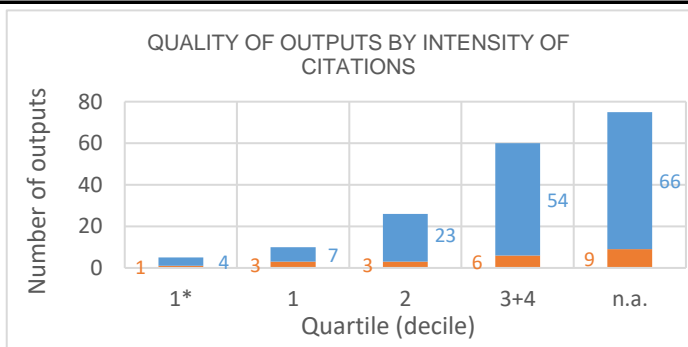
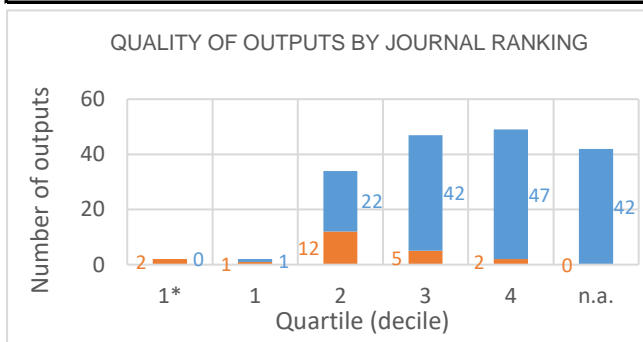
Field structure of outputs: number of outputs of the team in different subject categories (subfields); if the output is assigned to more than one field, the field where the publication performs best (assessed by Quality of outputs by journals ranking) is taken; the table shows up to 20 fields.

Detailed explanation of the indicators is provided in the Methodology of evaluation, Annex 2 – Bibliometrics.

Evaluation of the Research and Professional Activities of the Institutes of the Czech Academy of Sciences for 2015–2019

BIBLIOMETRIC PARAMETERS OF ALL OUTPUTS INCLUDING THOSE EVALUATED IN THE PHASE I.

Institute: Institute of Plasma Physics of the CAS, v. v. i.
Team: Materials Engineering
Head: Ing. Tomáš Chráska, Ph.D.
Field: Materials engineering
Total number of outputs: 176 **Evaluated outputs:** 22



TYPES OF COLLABORATION

Collaboration	Outputs (evaluated)	Outputs (not evaluated)
A1	1	10
B	2	59
B1	6	25
C	4	25
C1	5	15
D	1	4
D1	2	2
E		
n.a.		6
Without affiliation	1	8
A1+B1+C1+D1	14	52
B+C+D+E	7	88

FIELD STRUCTURE OF OUTPUTS

Field structure of outputs	Outputs (evaluated)	Outputs (not evaluated)
Materials Science Multidisciplinary	7	65
Metallurgy Metallurgical Engineering	3	40
Materials Science Coatings Films	4	26
Nuclear Science Technology	3	16
Physics Applied	2	14
Materials Science Ceramics	8	6
Physics Multidisciplinary		14
Chemistry Physical		7
n.a.		6
Nanoscience Nanotechnology	1	4
Engineering Chemical		3
Chemistry Multidisciplinary		3
Materials Science Characterization Techniques		3
Electrochemistry		2
Energy Fuels		2
Engineering Mechanical		2
Chemistry Inorganic Nuclear		2
Physics Nuclear		2
Engineering Multidisciplinary		1
Materials Science Biomaterials	1	

Total number of outputs: outputs of the team published during the evaluated period 2015-2019.

Evaluated outputs: selected outputs submitted by the team to the Phase I of evaluation.

Outputs used for bibliometry: subset of all outputs registered in the Web of Science; document type: article, review or proceedings paper.

Quality of outputs by journal ranking: number of outputs in top decile (1*) and quartiles (1-4) by AIS of journals; n. a. - outputs in journals without AIS; orange: outputs from the Phase I, blue: the other outputs of the team.

Quality of outputs by intensity of citations: number of outputs in the top decile (1*) and in quartiles (1, 2, 3+4) determined from the list of outputs ordered by the number of citations (downloaded from the Web of Science at the beginning of evaluation) for each subject category, year, and type of output; n. a. – the data are not robust enough for relevant judgement; orange: outputs from the Phase I, blue: the other outputs of the team.

Types of collaboration: outputs created exclusively in a particular institute are marked by A1, outputs created within national cooperation by max. 5 organizations are marked by B, outputs created within international cooperation by max. 5 organizations are marked C, outputs created within large collaboration exceeding 5 organizations are marked D, outputs created within large international collaboration are marked E. It is distinguished by marking B1/B, C1/C and D1/D whether the output has/does not have a corresponding author from a particular team.

Field structure of outputs: number of outputs of the team in different subject categories (subfields); if the output is assigned to more than one field, the field where the publication performs best (assessed by Quality of outputs by journals ranking) is taken; the table shows up to 20 fields.

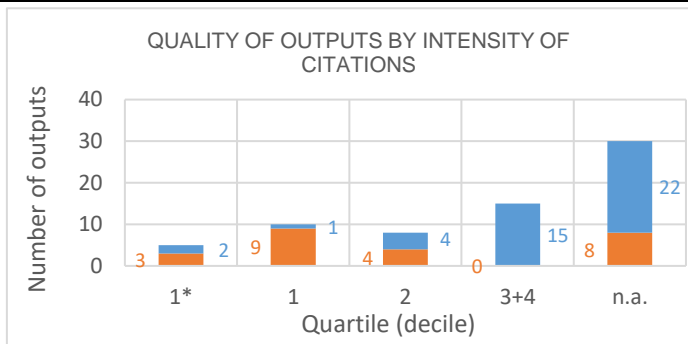
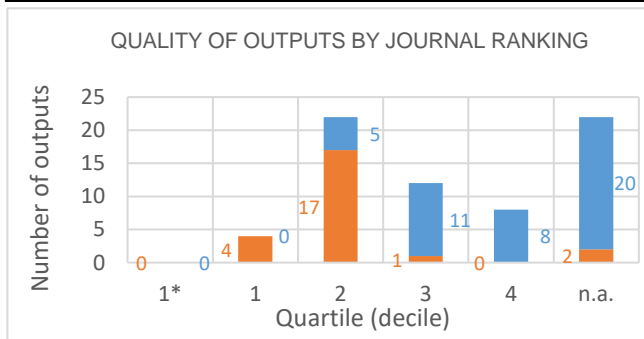
Detailed explanation of the indicators is provided in the Methodology of evaluation, Annex 2 – Bibliometrics.

NOTE: The significance of bibliometrics in technical sciences is very limited.

Evaluation of the Research and Professional Activities of the Institutes of the Czech Academy of Sciences for 2015–2019

BIBLIOMETRIC PARAMETERS OF ALL OUTPUTS INCLUDING THOSE EVALUATED IN THE PHASE I.

Institute: Institute of Plasma Physics of the CAS, v. v. i.
Team: Pulse Plasma Systems
Head: Ing. Petr Lukeš, Ph.D.
Field: Physical sciences
Total number of outputs: 68 **Evaluated outputs:** 24



TYPES OF COLLABORATION

Collaboration	Outputs (evaluated)	Outputs (not evaluated)
A1	5	13
B	4	2
B1		7
C	7	9
C1	5	2
D	1	2
D1		2
E		
n.a.	2	5
Without affiliation		2
A1+B1+C1+D1	10	24
B+C+D+E	12	13

FIELD STRUCTURE OF OUTPUTS

Field structure of outputs	Outputs (evaluated)	Outputs (not evaluated)
Physics Fluids Plasmas	10	15
Physics Applied	9	15
Chemistry Physical	2	5
n.a.	2	5
Optics		6
Engineering Electrical Electronic		5
Engineering Chemical		5
Physics Condensed Matter	1	3
Electrochemistry	1	2
Chemistry Multidisciplinary	1	2
Polymer Science	1	2
Biochemistry Molecular Biology		2
Biology		2
Biophysics		2
Materials Science Multidisciplinary	1	1
Medicine Research Experimental		2
Mechanics		2
Energy Fuels		1
Engineering Environmental	1	
Environmental Sciences	1	

Total number of outputs: outputs of the team published during the evaluated period 2015-2019.

Evaluated outputs: selected outputs submitted by the team to the Phase I of evaluation.

Outputs used for bibliometry: subset of all outputs registered in the Web of Science; document type: article, review or proceedings paper.

Quality of outputs by journal ranking: number of outputs in top decile (1*) and quartiles (1-4) by AIS of journals; n. a. - outputs in journals without AIS; orange: outputs from the Phase I, blue: the other outputs of the team.

Quality of outputs by intensity of citations: number of outputs in the top decile (1*) and in quartiles (1, 2, 3+4) determined from the list of outputs ordered by the number of citations (downloaded from the Web of Science at the beginning of evaluation) for each subject category, year, and type of output; n. a. – the data are not robust enough for relevant judgement; orange: outputs from the Phase I, blue: the other outputs of the team.

Types of collaboration: outputs created exclusively in a particular institute are marked by A1, outputs created within national cooperation by max. 5 organizations are marked by B, outputs created within international cooperation by max. 5 organizations are marked C, outputs created within large collaboration exceeding 5 organizations are marked D, outputs created within large international collaboration are marked E. It is distinguished by marking B1/B, C1/C and D1/D whether the output has/does not have a corresponding author from a particular team.

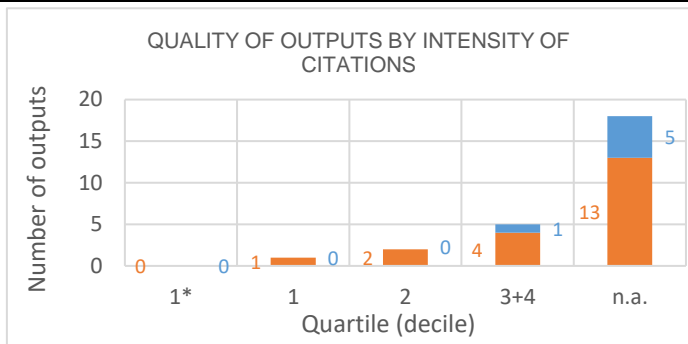
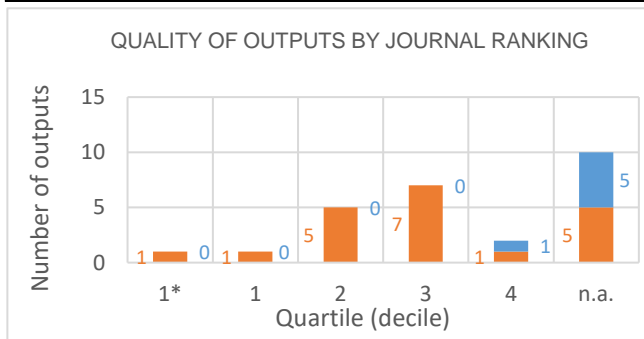
Field structure of outputs: number of outputs of the team in different subject categories (subfields); if the output is assigned to more than one field, the field where the publication performs best (assessed by Quality of outputs by journals ranking) is taken; the table shows up to 20 fields.

Detailed explanation of the indicators is provided in the Methodology of evaluation, Annex 2 – Bibliometrics.

Evaluation of the Research and Professional Activities of the Institutes of the Czech Academy of Sciences for 2015–2019

BIBLIOMETRIC PARAMETERS OF ALL OUTPUTS INCLUDING THOSE EVALUATED IN THE PHASE I.

Institute: Institute of Plasma Physics of the CAS, v. v. i.
Team: Plasma Chemical Technologies
Head: Ing. Michal Jeremiáš, Ph.D.
Field: Physical sciences
Total number of outputs: 26 **Evaluated outputs:** 20



TYPES OF COLLABORATION

Collaboration	Outputs (evaluated)	Outputs (not evaluated)
A1	6	
B		
B1	4	
C	3	1
C1	2	1
D		
D1		
E		
n.a.	5	4
Without affiliation		
A1+B1+C1+D1	12	1
B+C+D+E	3	1

FIELD STRUCTURE OF OUTPUTS

Field structure of outputs	Outputs (evaluated)	Outputs (not evaluated)
n.a.	5	4
Physics Applied	8	
Engineering Chemical	7	
Physics Fluids Plasmas	7	
Environmental Sciences	2	
Spectroscopy	2	
Biochemical Research Methods	1	
Energy Fuels	1	
Engineering Environmental	1	
Engineering Multidisciplinary		1
Chemistry Inorganic Nuclear	1	
Chemistry Organic	1	
Materials Science Coatings Films		1

Total number of outputs: outputs of the team published during the evaluated period 2015-2019.

Evaluated outputs: selected outputs submitted by the team to the Phase I of evaluation.

Outputs used for bibliometry: subset of all outputs registered in the Web of Science; document type: article, review or proceedings paper.

Quality of outputs by journal ranking: number of outputs in top decile (1*) and quartiles (1-4) by AIS of journals; n. a. - outputs in journals without AIS; orange: outputs from the Phase I, blue: the other outputs of the team.

Quality of outputs by intensity of citations: number of outputs in the top decile (1*) and in quartiles (1, 2, 3+4) determined from the list of outputs ordered by the number of citations (downloaded from the Web of Science at the beginning of evaluation) for each subject category, year, and type of output; n. a. – the data are not robust enough for relevant judgement; orange: outputs from the Phase I, blue: the other outputs of the team.

Types of collaboration: outputs created exclusively in a particular institute are marked by A1, outputs created within national cooperation by max. 5 organizations are marked by B, outputs created within international cooperation by max. 5 organizations are marked C, outputs created within large collaboration exceeding 5 organizations are marked D, outputs created within large international collaboration are marked E. It is distinguished by marking B1/B, C1/C and D1/D whether the output has/does not have a corresponding author from a particular team.

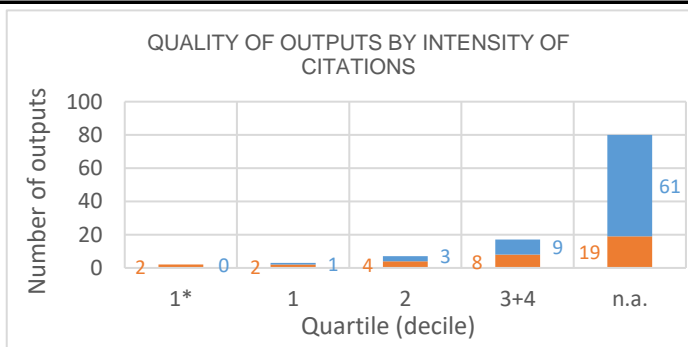
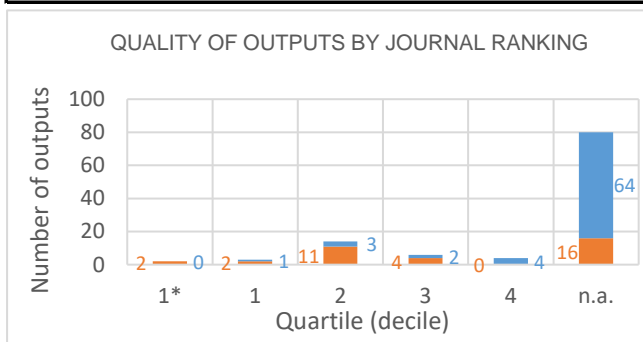
Field structure of outputs: number of outputs of the team in different subject categories (subfields); if the output is assigned to more than one field, the field where the publication performs best (assessed by Quality of outputs by journals ranking) is taken; the table shows up to 20 fields.

Detailed explanation of the indicators is provided in the Methodology of evaluation, Annex 2 – Bibliometrics.

Evaluation of the Research and Professional Activities of the Institutes of the Czech Academy of Sciences for 2015–2019

BIBLIOMETRIC PARAMETERS OF ALL OUTPUTS INCLUDING THOSE EVALUATED IN THE PHASE I.

Institute: Institute of Plasma Physics of the CAS, v. v. i.
Team: TOPTEC
Head: Ing. Vít Léděl, Ph.D.
Field: Other engineering and technologies
Total number of outputs: 109 **Evaluated outputs:** 35



TYPES OF COLLABORATION

Collaboration	Outputs (evaluated)	Outputs (not evaluated)
A1	5	35
B	3	12
B1	3	14
C	2	1
C1	4	2
D	3	8
D1		1
E		
n.a.	15	1
Without affiliation		
A1+B1+C1+D1	12	52
B+C+D+E	8	21

FIELD STRUCTURE OF OUTPUTS

Field structure of outputs	Outputs (evaluated)	Outputs (not evaluated)
Optics	5	63
Physics Applied	8	34
Instruments Instrumentation	2	24
n.a.	15	1
Materials Science Multidisciplinary	6	1
Engineering Electrical Electronic		6
Astronomy Astrophysics		4
Chemistry Physical	2	2
Nanoscience Nanotechnology	3	1
Engineering Mechanical	1	2
Chemistry Multidisciplinary	1	2
Physics Atomic Molecular Chemical	1	2
Physics Condensed Matter	3	
Acoustics	1	1
Imaging Science Photographic Techn		2
Mechanics	1	1
Electrochemistry	1	
Energy Fuels	1	
Materials Science Coatings Films	1	
Multidisciplinary Sciences	1	

Total number of outputs: outputs of the team published during the evaluated period 2015-2019.

Evaluated outputs: selected outputs submitted by the team to the Phase I of evaluation.

Outputs used for bibliometry: subset of all outputs registered in the Web of Science; document type: article, review or proceedings paper.

Quality of outputs by journal ranking: number of outputs in top decile (1*) and quartiles (1-4) by AIS of journals; n. a. - outputs in journals without AIS; orange: outputs from the Phase I, blue: the other outputs of the team.

Quality of outputs by intensity of citations: number of outputs in the top decile (1*) and in quartiles (1, 2, 3+4) determined from the list of outputs ordered by the number of citations (downloaded from the Web of Science at the beginning of evaluation) for each subject category, year, and type of output; n. a. – the data are not robust enough for relevant judgement; orange: outputs from the Phase I, blue: the other outputs of the team.

Types of collaboration: outputs created exclusively in a particular institute are marked by A1, outputs created within national cooperation by max. 5 organizations are marked by B, outputs created within international cooperation by max. 5 organizations are marked C, outputs created within large collaboration exceeding 5 organizations are marked D, outputs created within large international collaboration are marked E. It is distinguished by marking B1/B, C1/C and D1/D whether the output has/does not have a corresponding author from a particular team.

Field structure of outputs: number of outputs of the team in different subject categories (subfields); if the output is assigned to more than one field, the field where the publication performs best (assessed by Quality of outputs by journals ranking) is taken; the table shows up to 20 fields.

Detailed explanation of the indicators is provided in the Methodology of evaluation, Annex 2 – Bibliometrics.

NOTE: The significance of bibliometrics in technical sciences is very limited.